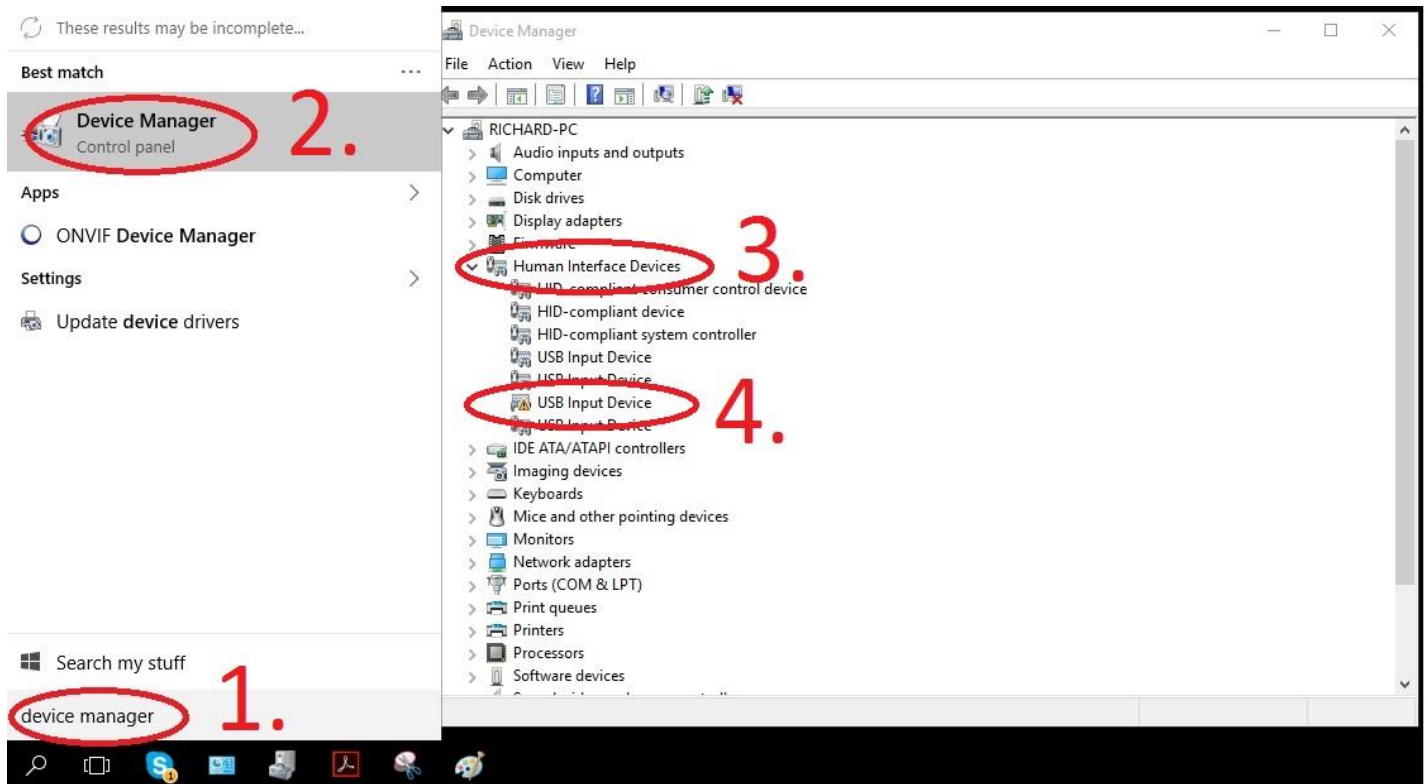
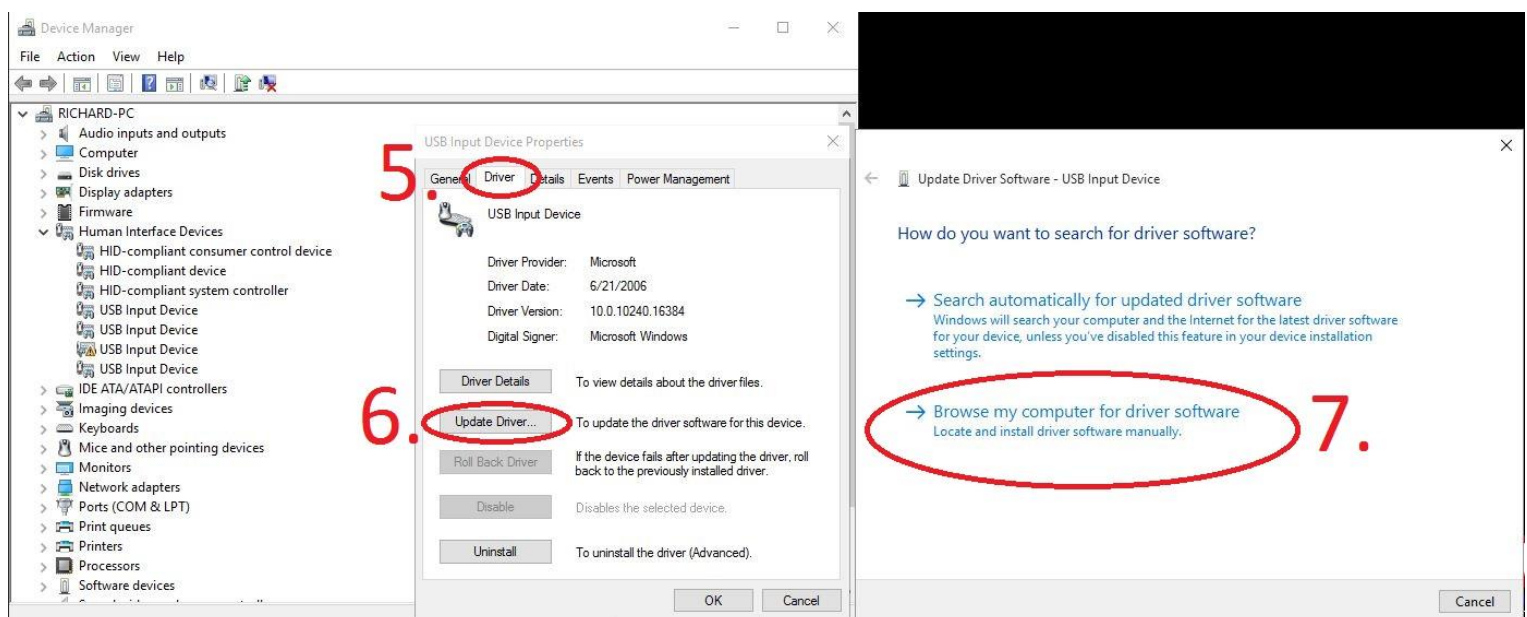


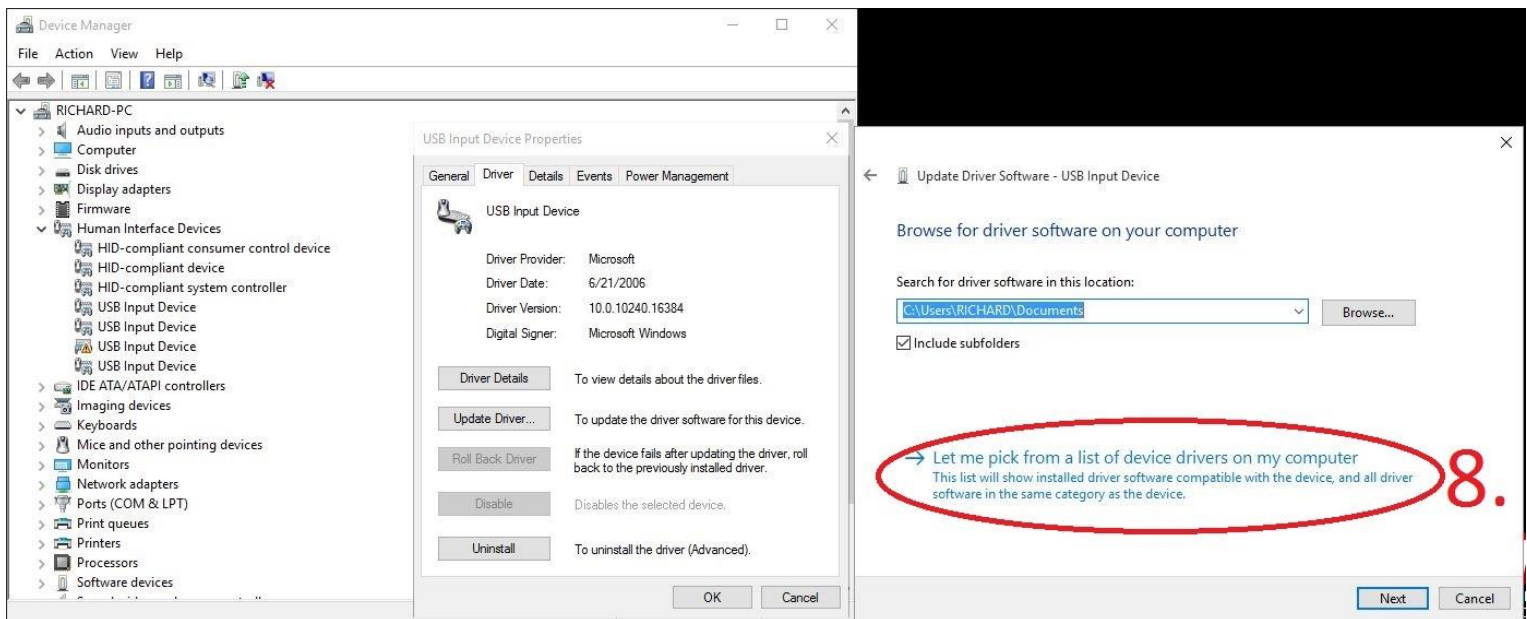
1. 2. Launch your computer **Device Manager**
3. Expand the **Human Interface Devices**
4. Double click **USB Input device** with a warning triangle



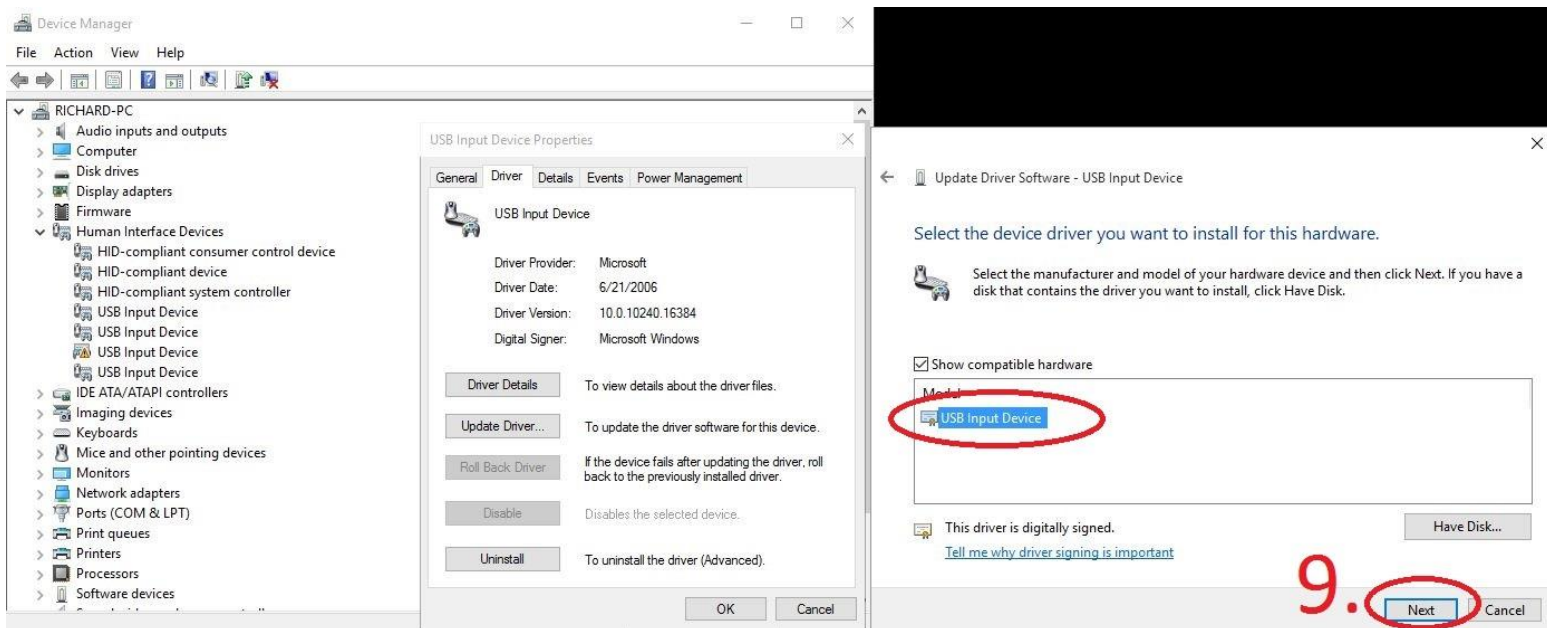
5. Select the tab **Driver**
6. Click on **Update driver**
7. Click on -> **Browse my computer for driver software**



8. Click on -> **Let me pick a list of device drivers on my computer**



9. Make sure that is selected (blue) Input Device and click on **Next**



10. Installation device driver has completed

11. You can make sure that warning triangle disappeared. Now it's ready.

